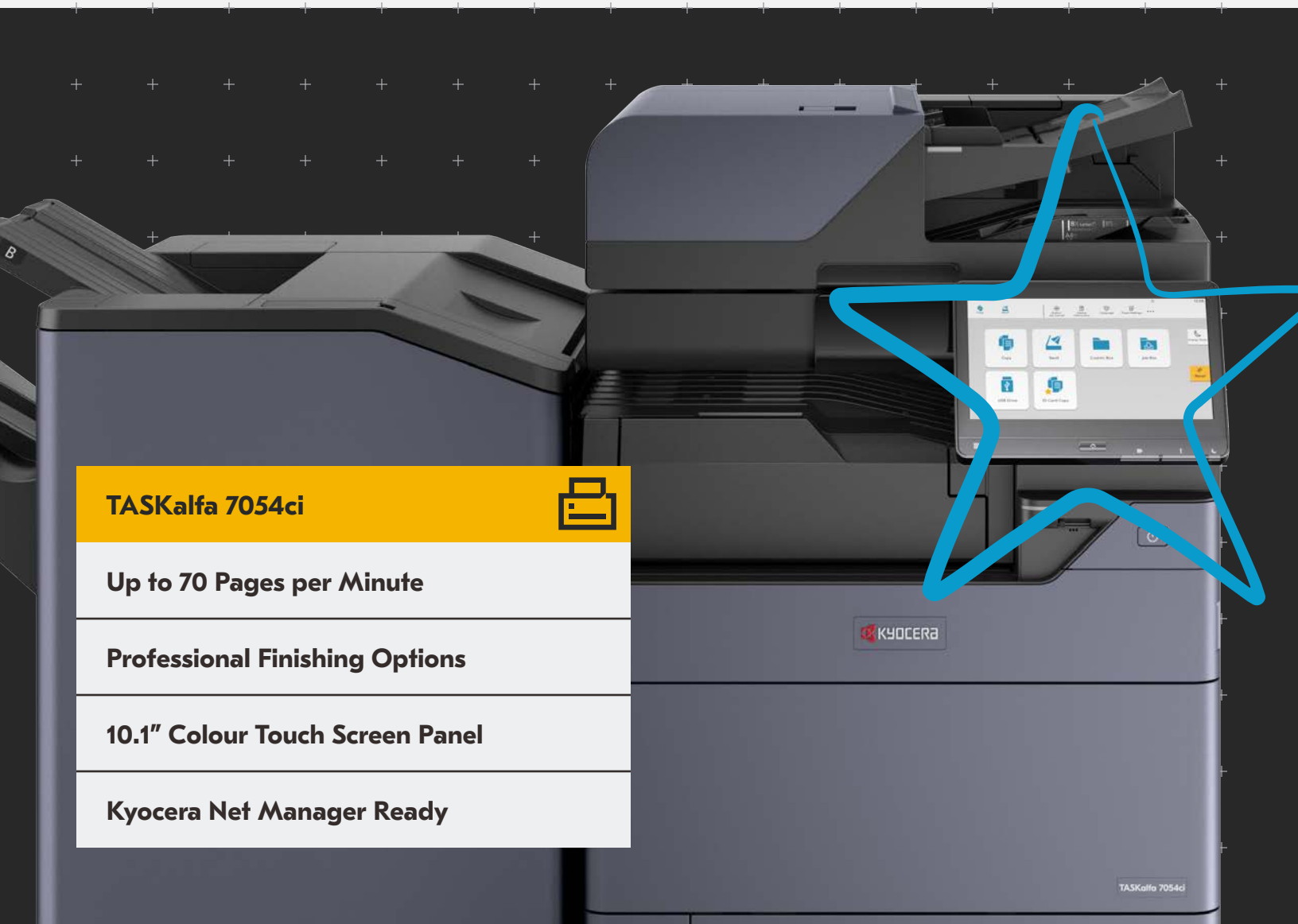


Your Workplace Evolution, in Colour

The Kyocera Evolution Series continues to grow with the addition of a new range of high-impact Colour A3 MFPs. These robust devices boast industry-leading technology and security, along with outstanding print and scan speeds, to ensure impeccable quality output every single time. Join the Evolution today and add a new dimension to your business.



TASKalfa 7054ci



Up to 70 Pages per Minute

Professional Finishing Options

10.1" Colour Touch Screen Panel

Kyocera Net Manager Ready

 **KYOCERA**

TASKalfa 7054ci

Output & Finishing Options³

OPTIONAL 250 SHEET INNER SHIFT TRAY JS-7100

Stack Capacity: 250-sheets
Paper Size: 8.5" x 11" – 11" x 17"
Paper Weight: 14 lb. Bond – 166 lb. Index (52 – 300gsm)

OPTIONAL 1,000 SHEET FINISHER DF-7120₄

Stack/Staple Capacity: Main Tray: 1,000-sheets/50-sheets (up to 24 lb. Bond [90gsm])
Paper Size: 5.5" x 8.5" – 12" x 18"
Paper Weight: 14 lb. Bond – 166 lb. Index (52 – 300gsm)
Edge Staple Position: 3 Positions: Top Left, Bottom Left, Center Bind
Optional Punch: PH-7A 2/3 Hole Punch Unit, supports 5.5" x 8.5" – 12" x 18"; 14 lb. Bond – 166 lb. Index (52 – 300gsm)
Dimensions: 21.6" W x 24.4" D x 41.3" H

OPTIONAL 4,000 SHEET FINISHER DF-7140₄

Stack/Staple Capacity: Main Tray (A): 4,000-sheets; Sub Tray (B): 200-sheets/65-sheets (up to 24 lb. Bond [90gsm])
Paper Size: 5.5" x 8.5" – 12" x 18"
Paper Weight: 14 lb. Bond – 166 lb. Index (52 – 300gsm)
Edge Staple Position: 3 Positions: Top Left, Bottom Left, Center Bind
Optional Punch: PH-7A 2/3 Hole Punch Unit, supports 5.5" x 8.5" – 12" x 18"; 14 lb. Bond – 166 lb. Index
Dimensions: 29" W x 26" D x 42" H
Optional Booklet Folder/Trifold Unit BF-730: (DF-7140)
Booklet Folder: supports 8.5" x 11", 8.5" x 14", 11" x 17"
Fold Booklet (staple): 16 lb. – 24 lb. Bond (60 – 90gsm) 20-sheets; 25 lb. – 28 lb. Bond (91 – 105gsm) 13-sheets; Higher than 28 lb. Bond (Higher than 105 gsm) 1-sheet
Fold Booklet (no staple): 16 lb. – 24 lb. Bond (60 – 90gsm) 5-sheets; 25 lb. Bond – 72 lb. Index (91 – 120gsm) 3-sheets; 32 lb. Bond – 110 lb. Cover (121 – 256gsm) 1-sheet
Trifold: supports 8.5" x 11" only: 16 lb. – 24 lb. Bond (60 – 90gsm) 5-sheets; 25 lb. Bond – 72 lb. Index (91 – 120gsm) 3-sheets; 16lb. – 28 lb. Bond

Optional Multi-Bin Mailbox MT-730(B): (DF-7140) 7 Trays; supports: 16 lb. Bond – 90 lb. Index (60 – 163gsm); Stack Capacity per bin: 100-sheets: 5.5" x 8.5", 8.5" x 11"; 50-sheets: 8.5" x 14", 11" x 17"

OPTIONAL 4,000 SHEET FINISHER DF-7150₄

Stack/Staple Capacity: Main Tray (A): 4,000-sheets; Sub Tray (B): 200-sheets/100-sheets (up to 20 lb. Bond [80gsm])
Paper Size: 5.5" x 8.5" – 12" x 18"
Paper Weight: 14 lb. Bond – 166 lb. Index (52 – 300gsm)
Edge Staple Position: 3 Positions: Top Left, Bottom Left, Center Bind
Optional Punch: PH-7A 2/3 Hole Punch Unit, supports 5.5" x 8.5" – 12" x 18"; 14 lb. Bond – 166 lb. Index
Dimensions: 29" W x 26" D x 42" H

Optional Booklet Folder/Trifold Unit BF-9100: (DF-7150)

Booklet Folder: supports 8.5" x 11", 8.5" x 14", 11" x 17"
Fold Booklet (staple): 14 lb. – 24 lb. Bond (52 – 90gsm) 20-sheets; 25 lb. – 28 lb. Bond (91 – 105gsm) 13-sheets; Higher than 28 lb. Bond (Higher than 105 gsm) 1-sheet
Fold Booklet (no staple): 14 lb. – 24 lb. Bond (52 – 90gsm) 5-sheets; 24 lb. Bond – 28 lb. Index (91 – 105gsm) 3-sheets; 28 lb. Bond – 140 lb. Index (106 – 256gsm) 1-sheet
Trifold: supports 8.5" x 11" only: 14 lb. – 24 lb. Bond (52 – 90gsm) 5-sheets; 25 lb. Bond – 28 lb. Index (91 – 105gsm) 3-sheets; 16lb. – 28 lb. Bond

OPTIONAL INSERTER UNIT IS-7100

Paper Capacity: 250-sheets x 2 Trays (based on 20 lb. Bond [80gsm])
Function: Feeds Front, Back Covers or Sheet Insertion
Paper Size: 5.5" x 8.5" – 12" x 18"
Paper Weight: 14 lb. Bond – 166 lb. Index (52 – 300gsm)
Dimensions: 27.6" W x 24.2" D x 52.4" H

OPTIONAL Z-FOLD UNIT ZF-7100₅

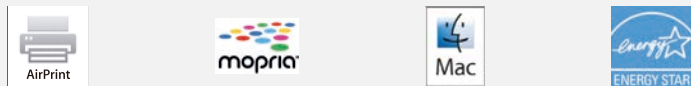
Fold Type Supported:
Z-Fold: 1-sheet folded (18 – 28 lb. Bond [64-105gsm])
Bi-Fold: 1-sheet folded (18 – 28 lb. Bond [64-105gsm])
Inner/Outer Trifold (based on 8.5" x 11R):
 3-sheets (up to 20 lb. Bond [64-74gsm])
 2-sheets (up to 24 lb. Bond [70-90gsm])
 1-sheet (up to 28 lb. Bond [91-105gsm])
 1-sheet (for all other size sheets)
Paper Sizes Supported:
Z-Fold: 8.5" x 11R" – 11" x 17"
Bi-Fold: 8.5" x 11" – 12" x 18"
Trifold: 8.5" x 11" – 11" x 17"
Dimensions: 8.2" W x 28.7" D x 38.5" H

ADDITIONAL OPTIONS

AK-7110 Bridge Unit Attachment Kit, AK-7120 Bridge Unit Attachment Kit (ZF-7100), JS-7100 Job Separator, HD-16 Large Capacity HDD (1TB), Banner Guide 10, Internet Fax Kit (A), Card Authentication Kit (B), Data Security Kit 10, Dual NIC (1B-50), Extended Range Wireless LAN NIC (1B-51), Thin Print option (UG-33), Printer Emulation option (UG-34), DT-730(B) Document Tray, Scan Extension Kit (A) for Text Searchable PDF; MS Office File, Keyboard Holder 10, Numeric Keypad (NK-7130), Cabinet Stand, EFI Printing System 17 - Fiery Controller

¹ Requires PF-7140
² Only 1 Document Processor can be installed
³ Only 1 Output Option can be installed
⁴ Requires Bridge Unit Attachment Kit (AK-7110)
⁵ Requires Bridge Unit Attachment Kit (AK-7120)

Specifications and design are subject to change without notice. For the latest on connectivity visit kyoceradocumentsolutions.us. TASKalfa, PRESCRIBE, Kyocera Net Manager, Kyocera Net Viewer, Kyocera Device Manager, PDF Direct Print, Command Center RX, and KX Driver are trademarks of The Kyocera Companies. Mac OS and AirPrint are trademarks of Apple, Inc. Mopria is a trademark of Mopria Alliance, Inc. Windows is a trademark of Microsoft, Inc. All other trademarks are the property of their respective owners.



Kyocera Document Solutions Partner

KYOCERA Document Solutions Canada, Ltd.
 6120 Kestrel Road, Mississauga,
 ON L5T 1S8, Canada
 Tel: 905-670-4425



kyoceradocumentsolutions.ca